



**LAUSD**  
**UNIFIED**

EDUCATIONAL  
TRANSFORMATION  
OFFICE  
**BSAP**

**LAUSD**  
**UNIFIED**



# Making Data Actionable: Monitoring Progress Across MTSS Tiers

February 29, 2024



# Multi - Tiered Systems of Support (MTSS) Presentation

February 29, 2024



**LAUSD**  
UNIFIED

# Black Student Achievement Plan

Los Angeles Unified School District  
Educational Transformation Office

Updated December 5, 2023

Ms. Norma Spencer  
Administrator  
Black Student Achievement

Roberta Scott, PhD  
RethinkED VP National Partnerships

Successful Black student achievement is defined by high academic performance, strong social-emotional awareness and management, and a positive cultural identity.

## School Experience and Support

- Every student has an advocate
- Increase access to mental and social-emotional health resources
- Increase favorable school experience survey responses
- Access to culturally responsive curriculum and pedagogy
- Decrease discipline rates (arrests, suspensions, referrals)
- Elimination of policies and practices that contribute to school to prison pipeline

## Academic Achievement

- Graduation rate increase
- Attendance and chronic absenteeism rate decrease
- Increase enrollment in Advanced Placement and honors courses
- Increase proficiency in Math and ELA/English
- Increase number of students on track in A-G requirements
- Increase number of students at or above benchmark in literacy skills
- Decrease 1<sup>st</sup> time referrals for special education services

## Engagement

- Increase levels of parent and family engagement
- Increase participation in extracurricular activities at school
- Increase presence of community organizations on campus

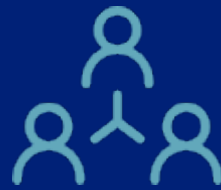
Furthermore, strategies and methods utilized to cultivate these things shall be directly responsive to the unique needs of Black students due in large to the historic and ongoing social and economic conditions experienced by Black people.

# Addressing the Needs of the Whole Child



## Student Surveys

Conduct for academics, social-emotional, school climate skills three times per year



## Social Emotional

Protected time for social-emotional skills: self-management, relationship-building, and responsible decision-making



## Positive climate

Promote a welcoming, supportive environment through community-building activities

Student surveys, universal prevention, and fostering a positive climate are key to supporting all students' well-being.

# Intensive Support and Specialized Services

## BSAP Team Members

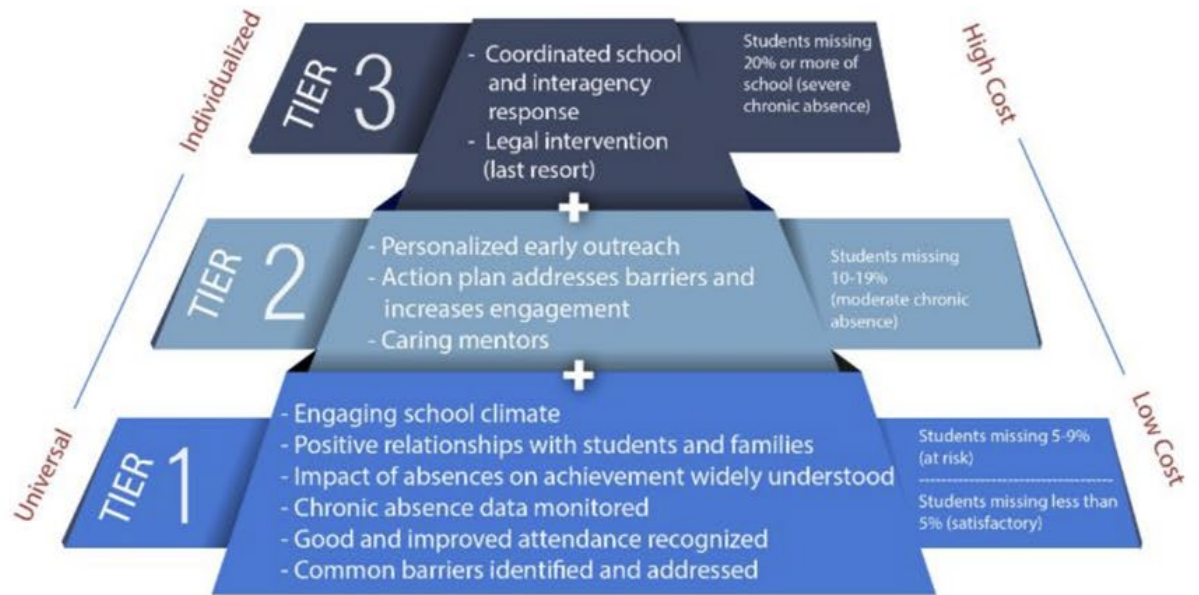
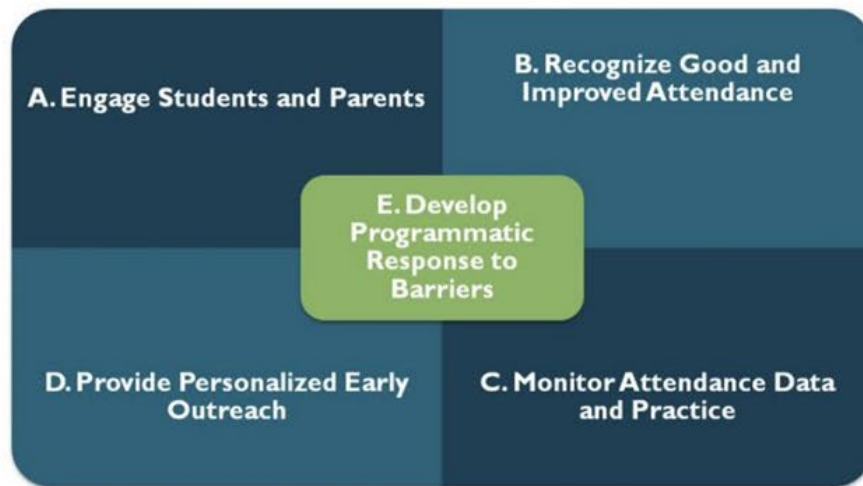
- PSA (Attendance)
- PSW (Social Work)
- Counselor
- Restorative Justice Teacher
- Community Representative
- School Climate Advocate



# Tiers Build One Upon Another

Interventions for each tier

Tiered Attendance Intervention





# Attendance Data

Attendance Band	January 21 - 22	January 22 - 23
Advanced	6.7%	10.1%
Proficient	18.9%	23.2%
Basic	15.2%	23.8%
Below Basic	18.7%	15.1%
Far Below Basic	41%	27.7%

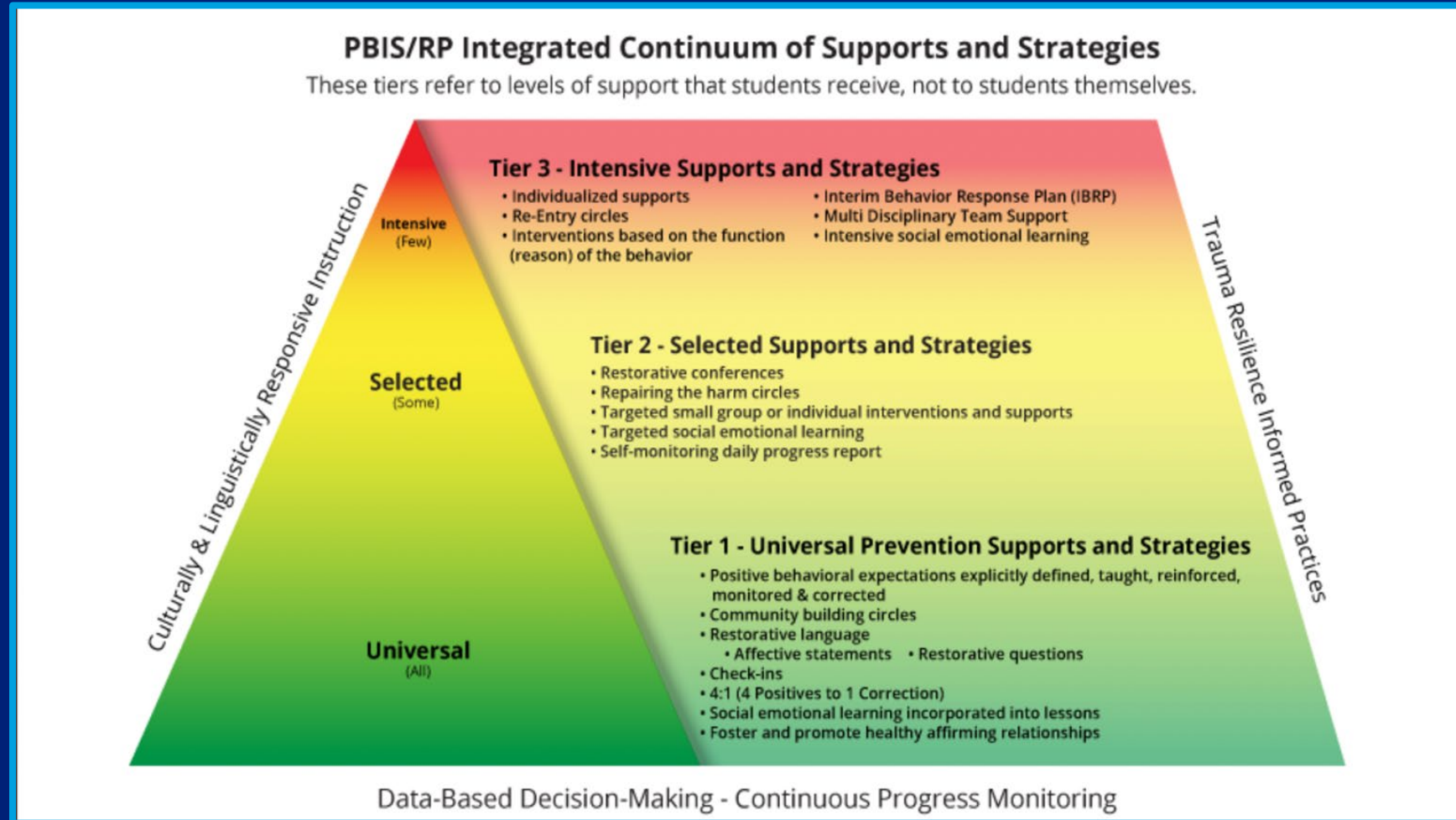
## Universal Interventions



25<sup>th</sup> Day Celebrations  
Bulletin Boards Promoting Attendance  
Attendance Themes

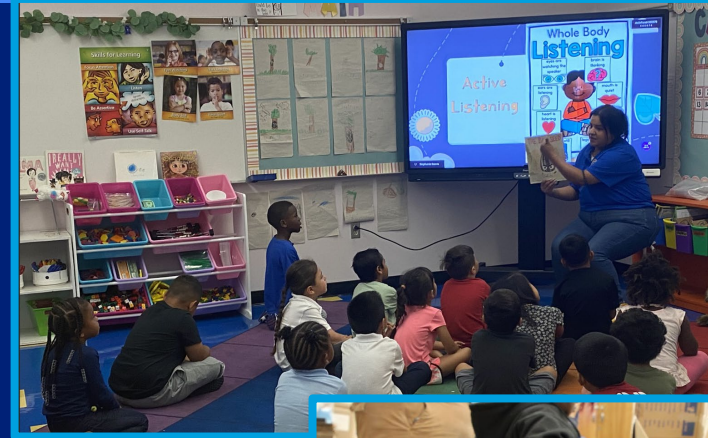


# Discipline Foundation Policy



# Universal Instruction and Differentiation

- Tiers of Instruction
- Learning Styles
- Differentiated Instruction
- Data-Driven Decision Making
- Culturally Responsive Teaching
- Universal Design for Learning



# Progress Monitoring and Targeted Intervention

- Students set goals and participate in 45 minutes of intervention: ELA/math
- Evaluate intervention effectiveness, 5 week data pulls
- Students data chats to review progress towards meeting goals
- Students receive additional targeted intervention: after school, Saturdays, winter break, spring break, and summer



# Academic Achievement

Academic Achievement	21-22	22-23	Difference
Five-Year Cohort Graduation Rate	83.1%	88.0%	4.8% Increase
High School students On-Track to Complete A-G Requirements (UC-CSU Entrance Requirements)	41.7%	45.0%	3.3% Increase
Students Enrolled in at Least One Advanced Placement (AP) or Honors Course	35.0%	40.8%	5.8% Increase
Meeting Early Literacy Benchmarks in Kindergarten	54.5%	60.7%	6.2% Increase
Meeting Early Literacy Benchmarks in First Grade	59.5%	61.5%	2.1% Increase
Meeting Early Literacy Benchmarks in Second Grade	52.5%	57.4%	4.9% Increase



# Social Emotional Learning



**MY CREW'S**

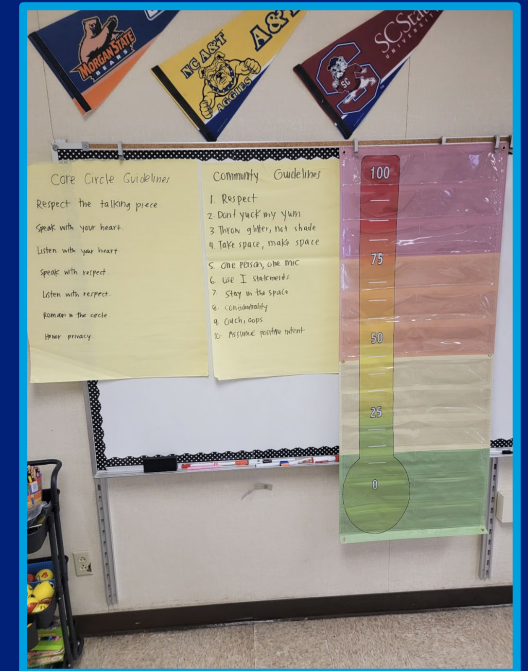
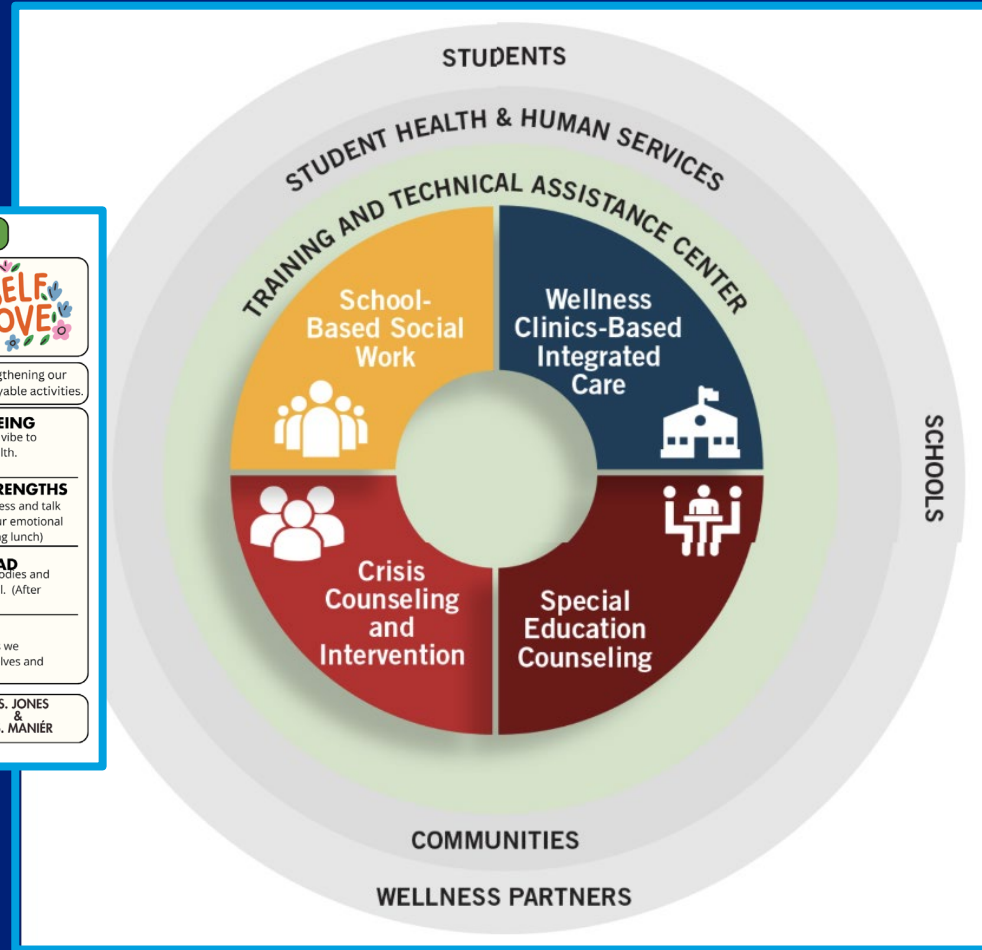
**2024 Wellness Calendar** 

Join us every Wednesday as we strengthening our physical and mental health through enjoyable activities.

<b>JAN 24</b>	<b>STEPS TO WELL-BEING</b> Join us as we walk, run, & vibrate to promote our physical health. (After School)
<b>JAN 31</b>	<b>ROUND TALK: STRENGTHS</b> Let's build our self-awareness and talk about ways to promote our emotional health during lunch. (During lunch)
<b>FEB 7</b>	<b>YOGA IN THE QUAD</b> Join us as we stretch our bodies and mind in nature after school. (After School)
<b>FEB 14</b>	<b>THE ART OF LOVE</b> Join us in arts and crafts as we celebrate the love of ourselves and others. (During lunch)

ALL MEETINGS WILL BE HELD IN ROOM 15

MS. JONES & MS. MANIER



# RethinkEd - Supporting BSAP Multi-Tiered Support

18 bi-weekly cohorts supported BSAP PSW, RJ, AP, SCA, and IC engagement in **Tenet C** by facilitating MTSS considerations, racial justice discussions, and cross-campus connections.



14 in person SEL curriculum whole-staff trainings

Dozens of one-on-one SEL implementation meetings



Tailor made SEL scope and sequences based on community needs

Transformative SEL curriculum development, prompted by the requests of BSAP, fills the gaps of traditional SEL.

## Supporting BIPOC Students With Transformative SEL

Read the resource. Add questions and reactions as you read. Create a chart recording what you notice and wonder about the text.

### Introduction

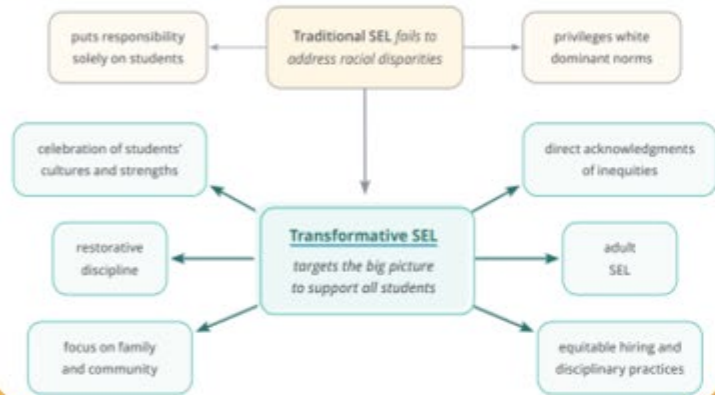
Social and emotional learning (SEL) can be leveraged to support students in their academic, citizenship, and mental wellness. However, when delivered through a traditional lens, SEL runs the risk of perpetuating harmful practices that target Black, Indigenous, and People of Color (BIPOC). Transformative SEL aims to support all students by affirming content that integrates their cultures and attends to the contextual factors that impact their experiences.

One intensive social-justice oriented workshop for ICs with Dr. Scott



# Ongoing Support

## The Need for Transformative SEL



Transformative SEL curriculum is up and running as a resource on the RethinkEd platform!

Targeted PSA and PSW support

RethinkEd continues to work with BSAP through offering implementation support and tailored resources.

Free curriculum access to BSAP schools who make a request.

3-Part Bilingual Family Workshop series targeting focus, conflict resolution, and self-compassion.

Parent and Community SEL Celebration Day coming in Spring 2024!



# Targeted Intervention

## Identifying Students

Use data to identify students struggling academically, behaviorally, socially, or emotionally every 5 weeks

## Small Group Instruction

Provide supplemental instruction to students in small groups to target skill deficits.  
45 minutes per week ELA/math

## Tiered Counseling

Whole Class  
Small Group  
Individual

## Social Skills Training

Restorative Justice  
Student Voice  
Self-regulation, cooperation.  
Positive Affirmations

## Parent Collaboration

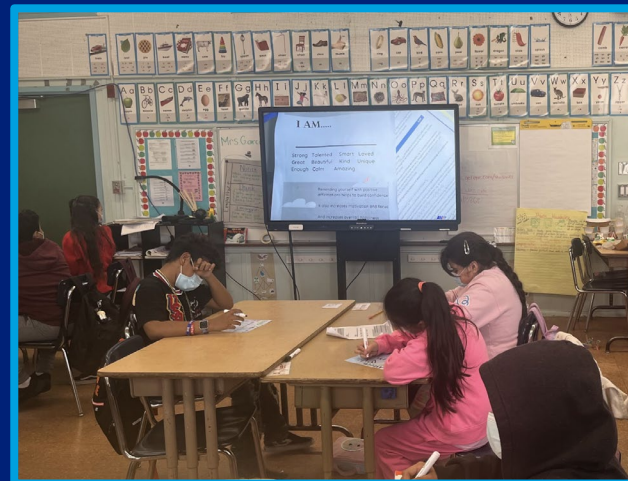
Parents as Partners  
In addition to conferences, parents receive academic and social-emotional updates

## Community Partnerships

Coordinate with community agencies to provide targeted student and family support.

# School Experience and Support

School Experience and Support	21-22	22-23	Difference
Every Student Has an Advocate	66.7%	81.4%	14.7% Increase
Access to Mental and Socio-Emotional Health Resources	40.9%	60.9%	20.0% Increase
Access to Culturally Responsive Curriculum and Pedagogy	59.2%	66.3%	7.0% Increase



# Engagement

Engagement	21-22	22-23	Difference
Parent & Family Engagement	44.6%	46.0%	1.4% Increase
Participation in Extracurricular Activities at School	60.5%	67.7%	7.1% Increase
Presence of Community Organizations on Campus	52.8%	98.1%	45.3% Increase



# Family Engagement

- Regular Communication
- Family Workshops
- Family Surveys
- Home Visits
- Volunteer Opportunities
- Family Resource Center



# Collaboration with External Agencies

Establish partnerships with local organizations

Connect students with healthcare providers

Connect families with  
counseling services

Connect students with after school programs



# Cultivate a Supportive School Culture



Build awareness  
Develop programs to celebrate  
diversity and teach cultural  
competency



Foster inclusion  
Create opportunities for  
students to share their  
backgrounds and make  
connections



Promote belonging  
Implement mentorship and  
peer support programs

By cultivating a supportive school culture of belonging and inclusivity, we can meet the needs of our diverse student population.

Q/A



Nine tenths of  
education is  
encouragement.

Anatole France